

# Installation/Operating Instructions

## 220V Rolleramic Electric Projection Screen by Draper

These Installation/Operating Instructions are available in the official language of the country where you purchase the product. Please contact your distributor to request a copy.

Vous pourriez demander les instructions d'installation et d'opération traduites dans la langue officielle du pays où vous achetez le produit. Veuillez demander à votre distributeur.

Die Gebrauchsanweisung für Installation und Konstruktion sind in der offiziellen Sprache des Landes, indem Sie das Produkt gekauft haben, vorhanden. Fragen Sie die jeweilige Verkaufs-Abteilung.

### Caution

- 1 Read instructions through completely before proceeding.
- 2 Follow instructions carefully. Installation contrary to instructions invalidates warranty.
- 3 Entire bottom of screen case should be unobstructed to permit access to bottom panels for making electrical connections or servicing.
- 4 Screen should be installed level (using a carpenter's level).
- 5 Nothing should be fastened to screen dowel or viewing surface.
- 6 Operating switch(es) packed separately in screen carton. Do not discard with packing material.
- 7 Screen operates on 220v., 50 hz., 1 ph. current.

**NOTE:** Screen has been thoroughly inspected and tested at factory and found to be operating properly prior to shipment.

### Hanging Screen

#### General:

When locating viewing surface and checking clearance for screen's operation, remember surface is not centered in screen case: see dimensional drawings on reverse. All installations should observe these important criteria:

- 1 Screen should be positively and securely supported so that vibration or even abusive pulling on viewing surface will not weaken installation.
- 2 Installer must insure that fasteners used are of adequate strength and suitable for the mounting surface.
- 3 Entire bottom of case must be readily accessible after installation is complete. Be sure the access door can open freely for adjustment or service.
- 4 Screens through 427 cm wide have 2 mounting brackets; wider screens have 3. These brackets should be located along case to line up with supporting beams or studding and evenly share the screen's weight. Left hand bracket is normally secured just to right of access door and right hand bracket about one foot from right end of case.
- 5 Screens with 3 brackets must be mounted so that center bracket is level with the others and does not force screen case upward or downward.
- 6 Do not use screen case to support adjacent sections of ceiling.
- 7 If trim pieces must be attached to case, do not permit screws to protrude through 19mm ( $\frac{3}{4}$ " wall of case. Do not attach trim with nails.
- 8 If case is painted, viewing surface slot must be shielded to protect viewing surface from paint splatters and overspray.
- 9 Do not seal unit in ceiling until electrical connections have been made and screen has been operated successfully. Screen must always be installed level so that fabric will not roll incorrectly or wrinkle.

#### Wall Installation—

Brackets should fasten to studding or other structural supports within wall.

#### Suspended Installation—

Chains should be attached to solid beams or rafters above screen. If possible, screen mounting brackets should be positioned so that chains hang vertically. Turnbuckles should be connected between chains and mounting brackets. After screen has been hung, turnbuckles should be adjusted so that screen

hangs level and chains share screen's weight equally.

#### Recessed Installation—

Recess should be constructed to fit screen case with brackets (see "Screen dimensions" on back of this sheet). Design recess so that entire bottom of screen case is unobstructed to permit access to bottom panel, screen roller and surface for servicing if required.

### Electrical Connections

Screen operates on 220v., 50 hz. 1 ph. AC current.

Junction box is located inside left end of case, behind bottom access door (see drawing, on reverse). Junction box contains terminal strip, per wiring diagram on reverse.

Screens are shipped with internal wiring complete, with all switches (fully boxed) and a wiring diagram. Wire connecting screen to switch (or switches) and switch to power supply should be supplied by installer. Wires should be connected following the wiring diagram provided, and all wiring should comply with local and national electrical codes.

All operating switches should be "Off" before power is connected.

### Operation

Remove all packing before attempting to operate screen. When screen is first operated, be cautious! Cycle unit down and up several times to confirm satisfactory operation.

**220V Single Station Control** — 3-position up-off-down switch permits operation to be stopped at any point. Factory set limit switches automatically stop screen when fully down or fully up.

**220V Multiple Station Control**—(Not CE approved) Switches are similar in appearance to 220V Single Station Control. Screen stops when switch is released and may be restarted in either direction. Factory set limit switches stop screen automatically when fully up or fully down.

**24V Control** — Three-button up-stop-down switches stop at any point desired, operate in any sequence. Factory set limit switches automatically stop screen when fully up or fully down.

**Key Operated Switching** — (Not CE approved) Two kinds of key-operated switches are optionally available with this unit. 1 The key-operated power supply switch controls power to the screen and switches. When it is "off", the switches will not operate screen. Key may be removed from the switch in either "on" or "off" position. 2 A three-position key switch permits the screen to be operated directly by key. In this case, the screen's operator must always have a key.

### Adjustments

Screen has been factory set and should not normally require further adjustment. However, if you desire to change the "up" and "down" stopping positions, proceed as follows:

**CAUTION:** Be sure all switches are in "off" position before adjusting limit switches. Always be prepared to shut screen off manually when new adjustment is being tested. Screen may be severely damaged if viewing surface is allowed to run too far up or too far down.

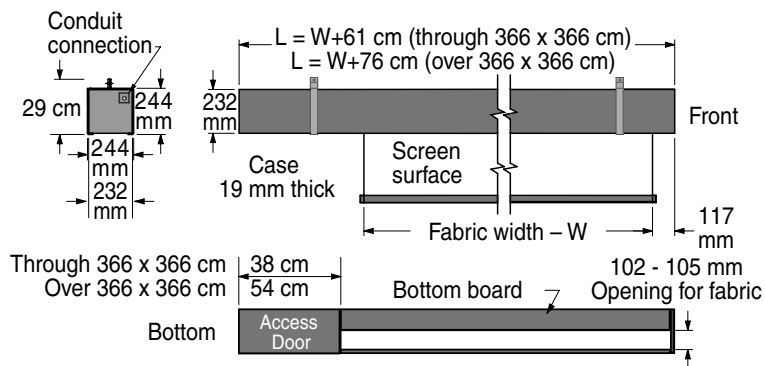
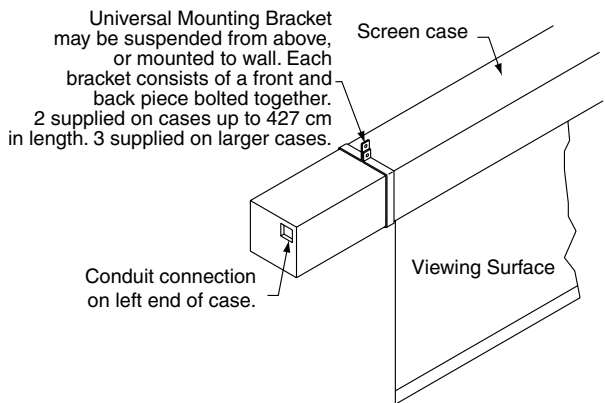
**Adjusting "fully up" position** — "Up" limit switch is located on right side of limit switch assembly, immediately behind access door to case. Right hand, hex head machine screw contacts limit switch button to shut screen off. Turning this machine screw clockwise will allow surface to run farther up into case. Turning it counterclockwise will cause screen to stop sooner, farther out of the case.

**Adjusting "fully down" position** — "Down" limit switch is located on left side of limit switch assembly, immediately behind access door to case. Left hand, hex head machine screw contacts limit switch button to shut screen off. Turning this machine screw clockwise will allow surface to run farther down before stopping. Turning it counterclockwise will cause screen to stop in a less extended position. At no time should fabric be unrolled far enough to expose any part of screen roller.

Make all adjustments in small increments, and be sure nut on machine screw is tight against steel limit switch support before closing access door.

# DRAPER

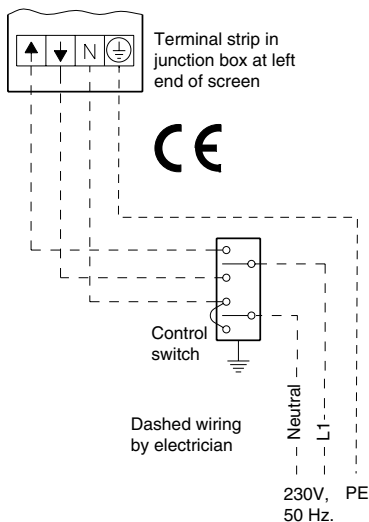
## Rolleramic Case Dimensions and Methods of Installation



## Wiring Diagrams

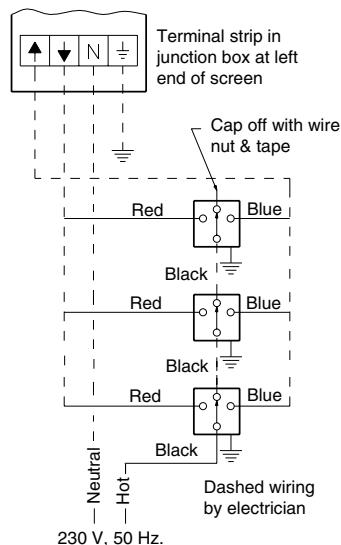
### Single Station Control

CE Approved



### Multiple Station Control

Not CE Approved



### Low Voltage (& Wireless) Control Wiring Diagram

CE Approved

