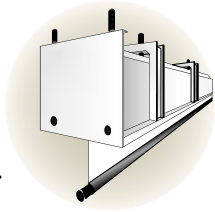


Paragon

Large motor-in-roller front projection screen.

Designed for auditoriums and lecture halls.



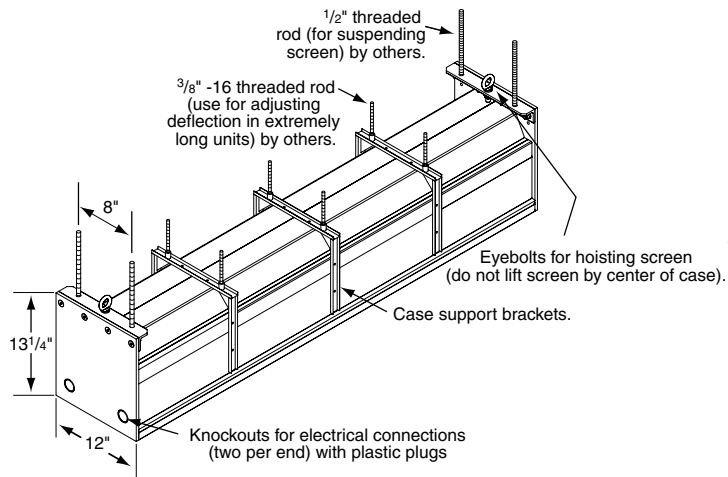
Sizes through 28' wide or 35' diagonal.

Choose the PARAGON for any setting where a very large screen is required. Sizes up to 21' x 28' or 35' diagonal. White extruded aluminum case can be suspended anywhere, with controls wherever they're needed. Your choice of a viewing surface: fiberglass matt white or glass beaded.

System Options

- **Extra Drop**—Up to 24' total screen height, either surface color or black. (Surface color standard on AV format screens, black on all others).
- **Black Masking Borders**—Borders are optional for AV format screens and standard for all other format screens.
- **Control Options**—Refer to page 6.
- **Wall-Mounting Brackets**—With hardware to attach 2 brackets to case.
- **Ceiling Tile Flange**—Extruded aluminum, finished white. 12' length, with hardware for attaching it to both front and back of case if required. Flange also available for the endcaps of the PARAGON case.

Paragon Case Dimensions/Method of Installation



Paragon installation at the National Museum of the American Indian of the Smithsonian Institution. Design & Installation: Glenn Polly, Videosonic. Photographer: © 2005 Bruce Katz. All located in New York, NY. U.S. Patent No. 6,873,461. Other patents pending.

Dimensions & Data—Paragon

Size H x W	Case Length	Net Wt. (lbs.)	Size H x W	Case Length	Net Wt. (lbs.)
<i>AV Format</i>			<i>AV Format</i>		
15' x 20'	250"	440	18' x 24'	298"	538
20' x 20'	250"	450	24' x 24'	298"	548
11' x 22'	274"	484	13' x 26'	322"	572
16 1/2' x 22'	274"	494	19 1/2' x 26'	322"	582
22' x 22'	274"	504	14' x 28'	346"	616
12' x 24'	298"	528	21' x 28'	346"	626
Nominal Diagonal	Image Area H x W	Overall Size	Case Length	Net Wt. (lbs.)	
<i>NTSC Video Format (4:3)</i>					
25'	177" x 236"	182" x 240"	250"	440	
27 1/2'	194" x 260"	199" x 264"	274"	484	
30'	212" x 284"	217" x 288"	298"	528	
32 1/2'	230" x 308"	235" x 312"	322"	572	
35'	248" x 332"	253" x 336"	346"	616	

Case dimensions 13 1/4" high x 12" wide. Optional wall mounting brackets extend 1 3/4" beyond each end of case (hole centers are 1" from end of case).